

AUTISM & ADHD: A VIEW FROM THE INSIDE

WIHD
January 19, 2022

Michael Gilberg, Esq.

Robert M. Tudisco, Esq.
Barger & Gaines



AUTISM



What is Autism?

- Autism is a Neurodevelopmental Disability that affects the ability to process information particularly in the areas of communication and social interaction.
- Autism affects approximately 1 in 59 children born in the US.
- Autism is a spectrum condition so no 2 people are alike or will have the same challenges

Autistic “Special” Interests

Common Ones

- Trains
- Dinosaurs
- Sci-Fi
- Disney
- Sports
- Video Games

Uncommon Ones

- Toilets
- Roller Coasters
- Greek Mythology

The New Levels of Autism

The Three Functional Levels of Autism

ASD Level 1
Requiring Support



difficulty initiating social interactions

ASD Level 2
Requiring Substantial Support



social interactions limited to narrow special interests

ASD Level 3
Requiring Very Substantial Support



severe deficits in verbal and nonverbal social

Summary of Autism

- People with Autism do not need to be “fixed” just taught to live in society.
- People with Autism often have high anxiety, obsessive or repetitive thoughts, and social isolation leading to depression.
- Suicide is the leading cause of death among autistic people without intellectual disabilities. Among those with intellectual it’s epilepsy.



ADHD

WHAT IS ADHD

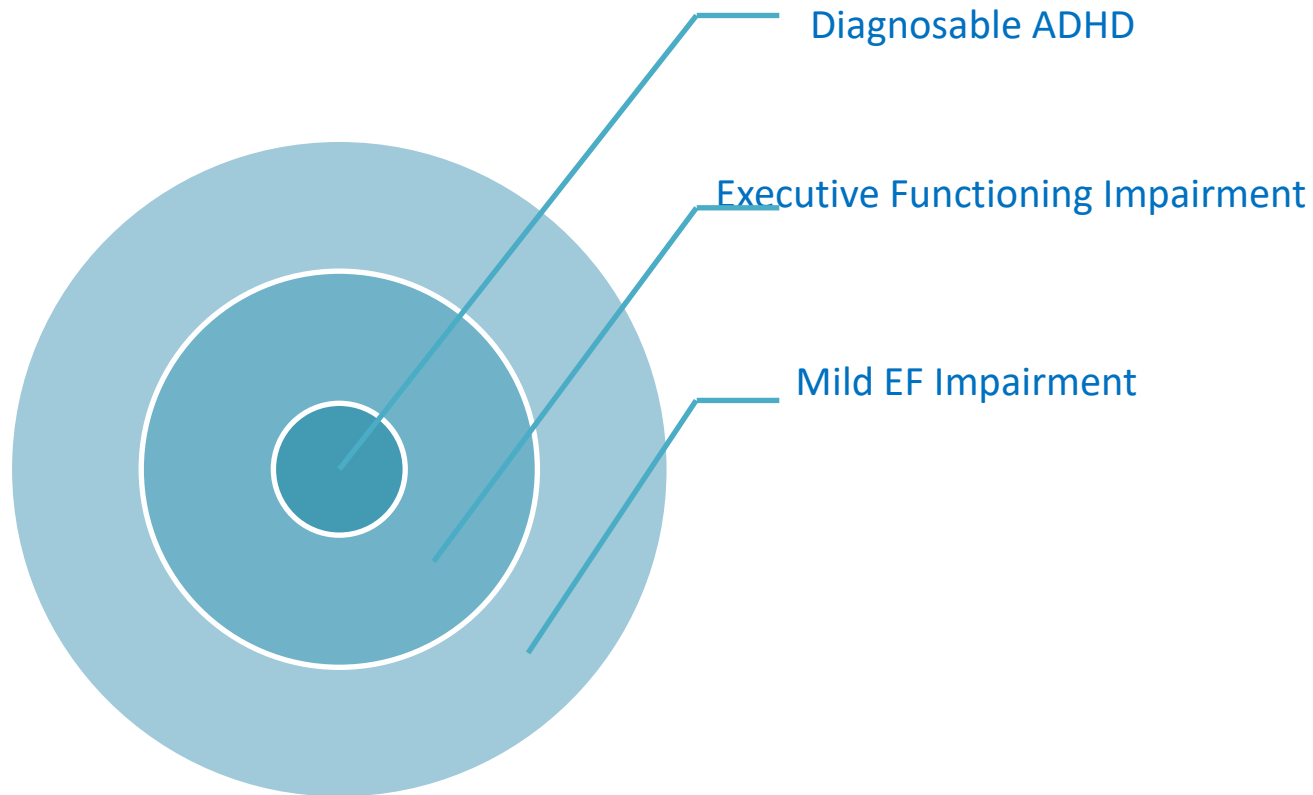
- ADHD is Neuro-Biological Disorder affecting the Pre-Frontal Cortex of the brain which is responsible for EXECUTIVE FUNCTIONING
- Neuro-Transmitter Dysfunction
 - Dopamine
 - Serotonin
 - Norepinephrine

Executive Functioning

- Organization
- Prioritization
- Time Perception
- Impulse Control
- Hyperactivity
- Attention Regulation
- Short Term Memory



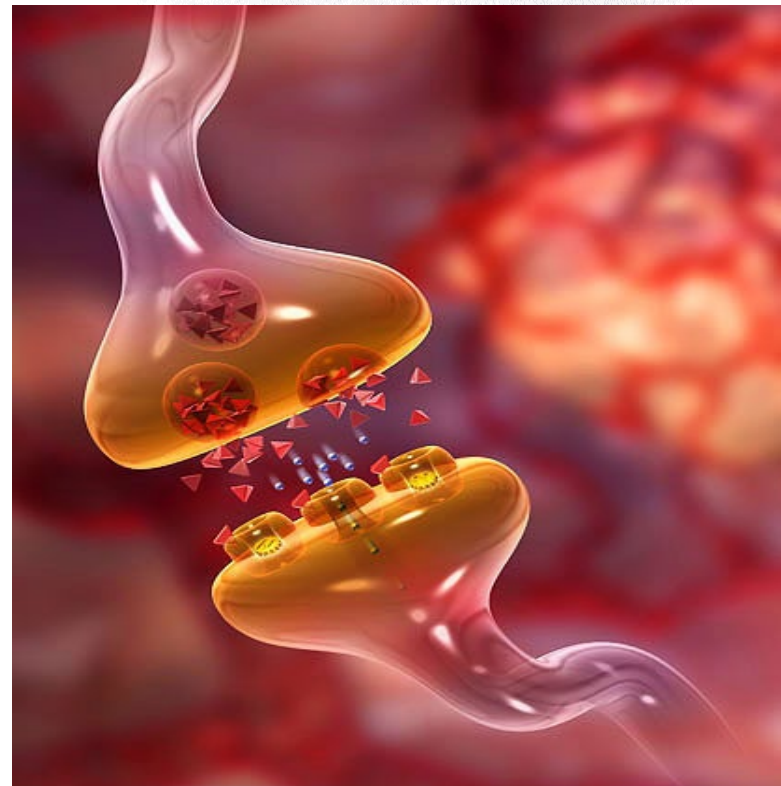
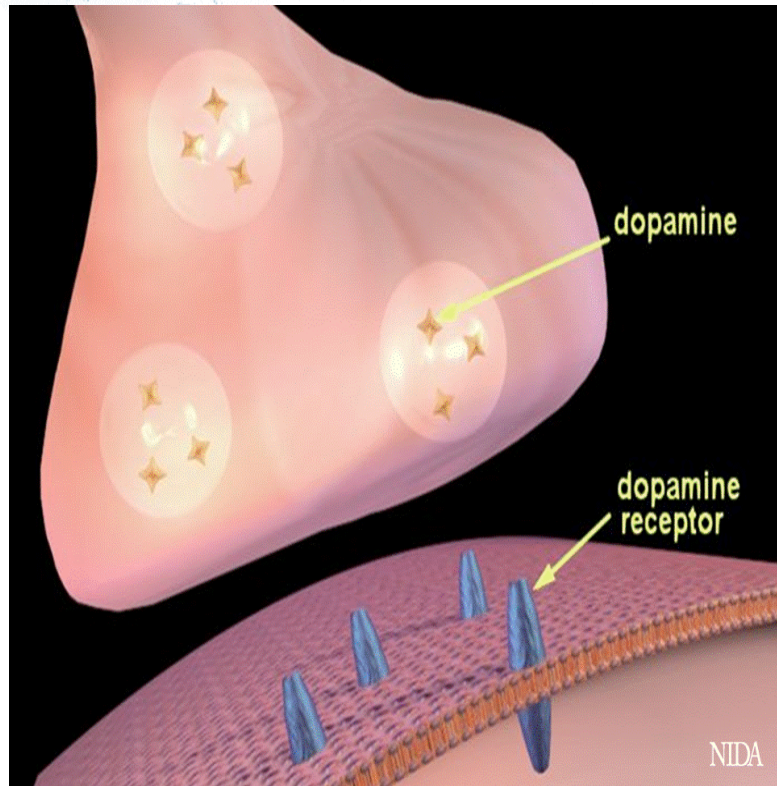
EF Impairment v. ADHD





THIS IS NOT HOW THE BRAIN WORKS

Neurotransmitters



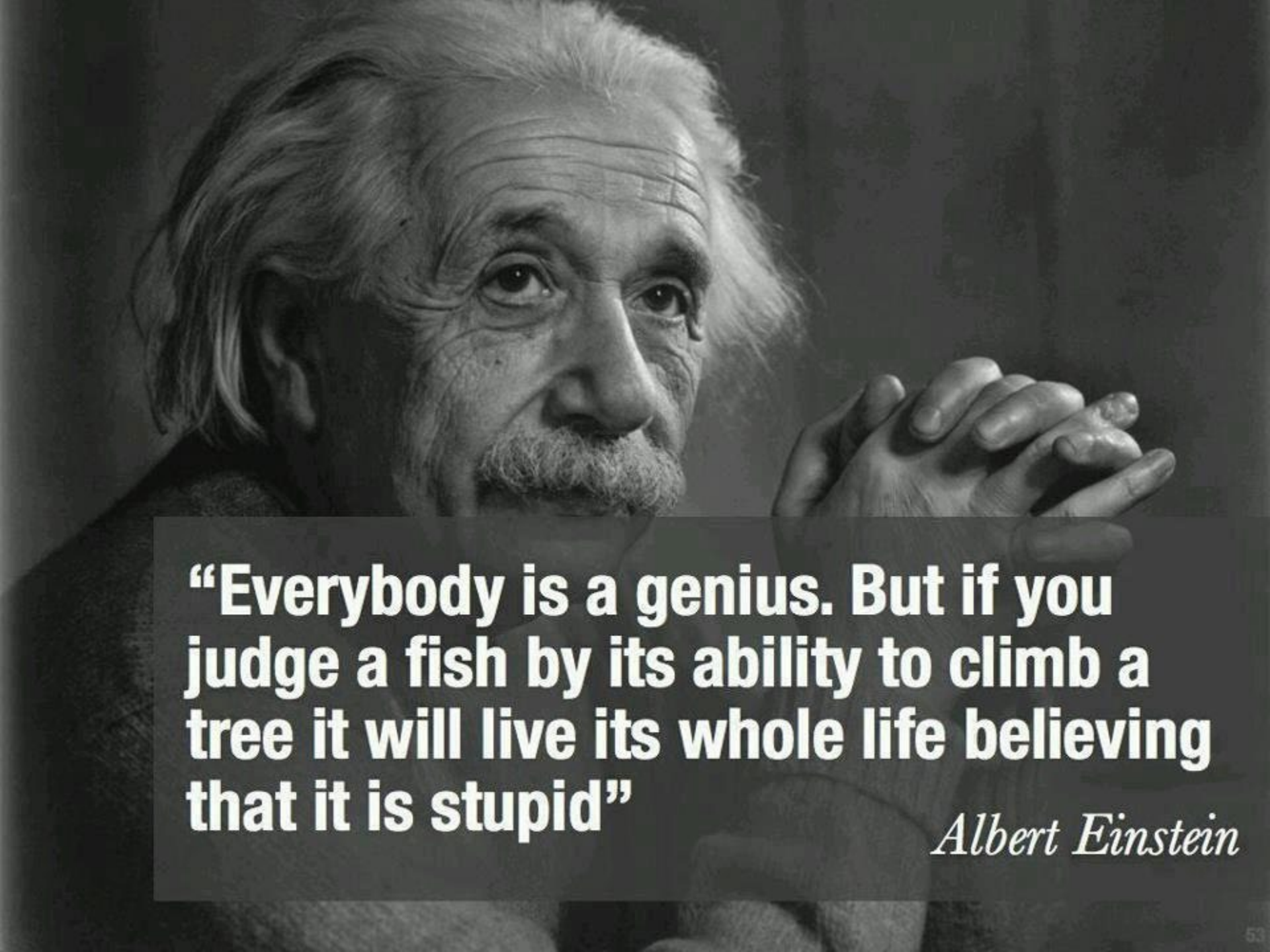


YOU ARE CLEAR TO
DO WHATEVER.

K-12



“It’s Not that the work is harder. It’s that there are so many more things I need to remember this year”

A black and white portrait of Albert Einstein, showing his characteristic wild hair and mustache. He is looking slightly to the right of the camera with a thoughtful expression. His hands are clasped together in front of him. The background is dark and out of focus.

“Everybody is a genius. But if you judge a fish by its ability to climb a tree it will live its whole life believing that it is stupid”

Albert Einstein

AUTISM & ADHD: A VIEW FROM THE INSIDE

Q&A

FlexSchool
January 9, 2020

Michael Gilberg, Esq.

Robert M. Tudisco, Esq.

Barger & Gaines