



Program Coordinator

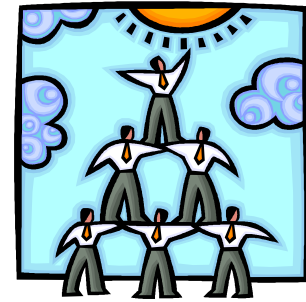
Trupti Rao, Psy.D.

Child Welfare Services

The Westchester Institute of
Human Development

Cedarwood Hall
Valhalla, NY 10595-1689
914 493 1022

Project IMPACT



**Improving Parenting
Achievements Together**

WHAT IS PROJECT IMPACT?

Project IMPACT is an intensive parent training program designed for parents with intellectual disabilities who have been reported for child maltreatment.

WHY ARE THESE PARENTING SERVICES BEING OFFERED?

Research has shown that parents with intellectual disabilities are at greater risk for having their children placed in foster care than parents who do not have intellectual disabilities.

There are programs available that provide basic parenting education and work with parents who have abused or neglected their children. However, a typical curriculum cannot effectively address the specific needs of a parent with intellectual disabilities, as the curriculum is often too complex and the length of the program too brief.

WHAT ARE THE PROGRAM GOALS?

To assist adults with intellectual disabilities parent their children.

To prevent the placement or replacement of children from these families into foster care.

WHAT SERVICES WILL PROJECT IMPACT PROVIDE?

We have developed an intensive, in-home 4-6 month parenting curriculum that has been tailored to meet the specific needs of parents with intellectual disabilities. Intervention consists of skills training using a combination of visual aids & hands-on practice. Topics covered include areas such as:

- basic child care
- child management skills
- home management skills
- parent/child interaction
- parent advocacy
- problem-solving skills

The program is individualized based on the ages of the children.

HOW DOES THE PROGRAM WORK?

One clinical staff member will be assigned to each family participating in the program. 1 ½ - 2 hours of in-home instruction will be provided 3-4 days a week and skills will be regularly assessed.

Throughout the program, parents will receive small incentives for their participation, as well as child care supplies.

The family's DSS caseworker is required to attend the 1st session and be an ongoing resource for the clinician.

WHO IS ELIGIBLE?

Families must meet the following criteria:

1. Must be involved with DSS.
2. Parent must be classified with:
 - (a) An IQ of 80 or less
 - and/or
 - (b) A history of significant Learning Disabilities
3. Children must currently be in care of parents.
4. Parents must be available during regular working hours.

HOW DO FAMILIES PARTICIPATE IN PROJECT IMPACT?

Referrals can be made by DSS through completion of a Project IMPACT referral form. Any questions about the program should be directed to Dr. Trupti Rao at (914) 493-8141.